

# Panel Meters & CTs

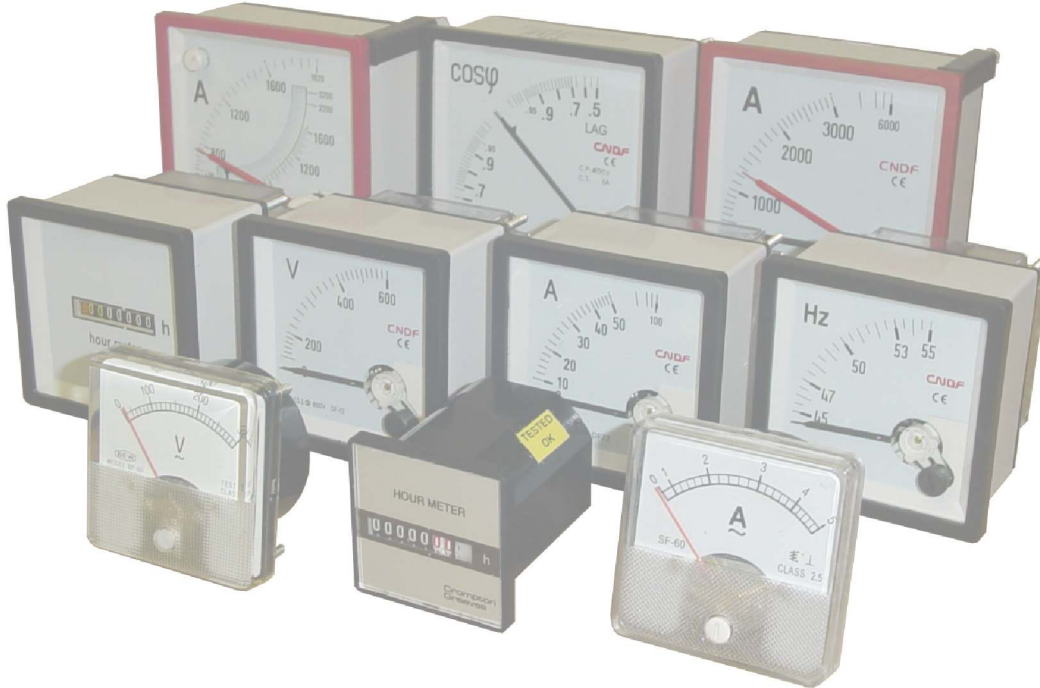
## SWITCHBOARD PANEL METERS

Ammeters & Scale Plates Page 11.2

Maximum Demand Meters & Scale Plates Page 11.3

Voltmeters Meters & Hour Meters Page 11.4

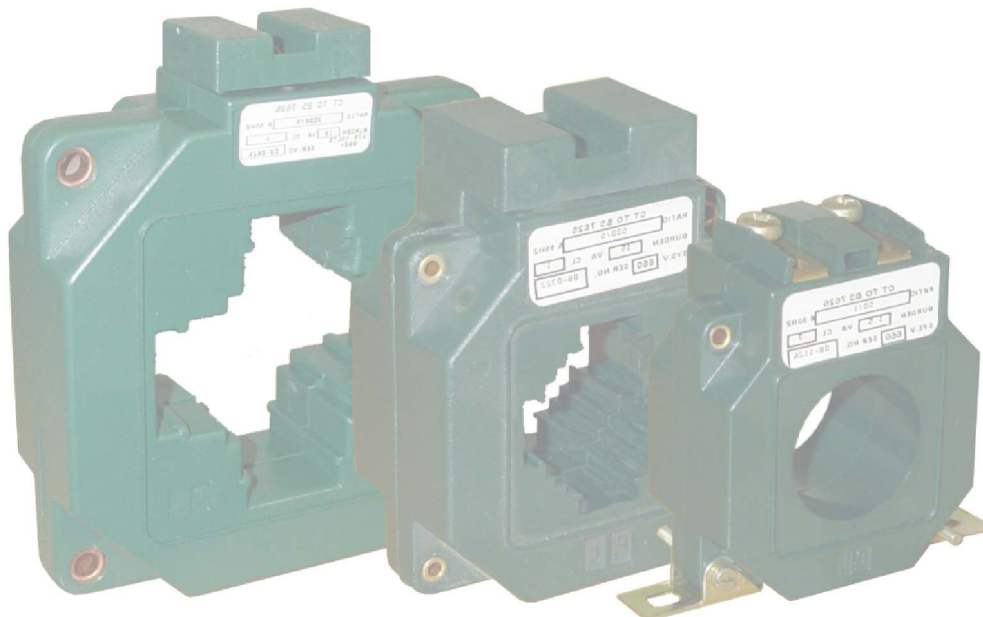
Power Factor Meter, Frequency Meters & Accessories Page 11.5



## CURRENT TRANSFORMERS

KRO & KR2 Series Page 11.6

LR1 Series Page 11.7



All Prices Exclude VAT and are subject to change without prior notice.

## SWITCHBOARD PANEL METERS

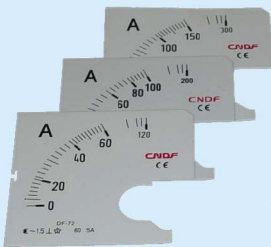
### AMMETERS - Moving Iron AC



AMMETER - BP SERIES



AMMETER - EQ SERIES



SCALE PLATES

PARTNO	AMPS	Size mm <sup>2</sup>	Cut-out (mm)	Price
<b><u>DIRECT READING</u></b>				
<b>BP60-*</b>	5, 10, 15, 20, 30 (no overscale)	60 x 60	55 Ø	203.70
<b>EQ72-*</b>	10/20, 15/30, 20/40, 25/50, 30/60 40/80 (2 x overscale)	72 x 72	68 x 68	231.30
<b><u>CT OPERATED - 5 amp (incl. scale plates)</u></b>				
<b>EQ72-*</b>	5/5, 10/5, 30/5, 50/5, 60/5, 80/5, 100/5, 150/5, 200/5, 250/5, 300/5, 400/5, 500/5, 600/5, 800/5, 1000/5, 1200/5 (2 x overscale)	72 x 72	68 x 68	231.50
<b>EQ96-*</b>	50/5, 100/5, 150/5, 200/5, 250/5, 300/5, 400/5, 500/5, 600/5, 800/5, 1000/5, 1200/5, 1600/5, 1800/5, 2000/5, 2500/5, 3000/5 (2 x overscale)	96 x 96	92 x 92	248.20
<b><u>SPARE SCALE PLATES</u></b>				
<b>ESC72-*</b>	5/5, 10/5, 30/5, 50/5, 60/5, 80/5, 100/5, 150/5, 200/5, 250/5, 300/5, 400/5, 500/5, 600/5, 800/5, 1000/5, 1200/5 (2 x overscale)	72 x 72		31.00
<b>ESC96-*</b>	50/5, 100/5, 150/5, 200/5, 250/5, 300/5, 400/5, 500/5, 600/5, 800/5, 1000/5, 1200/5, 1600/5, 1800/5, 2000/5, 2500/5, 3000/5 (2 x overscale)	96 x 96		31.50

**Note: Replace \* with Scale Plate value**

## SWITCHBOARD PANEL METERS

### MAXIMUM DEMAND METERS

15 minute response time  
Black, Red, Blue & White bezels available.

### COMBINATION



MAXIMUM DEMAND METER  
(combination)

PARTNO	AMPS	Size mm <sup>2</sup>	Cut-out (mm)	Price
<b><u>COMBINATION MAXIMUM DEMAND METERS (incl. scale plates)</u></b>				
<b>BIEQ96-*</b>	50/5, 100/5, 150/5, 200/5, 250/5, 300/5, 400/5, 500/5, 600/5, 800/5, 1000/5, 1200/5, 1600/5, 1800/5, 2000/5, 2500/5 (2 x overscale)	96 x 96	92 x 92	906.00
<b><u>COMBINATION SPARE SCALE PLATES</u></b>				
<b>BSC96-*</b>	50/5, 100/5, 150/5, 200/5, 250/5, 300/5, 400/5, 500/5, 600/5, 800/5, 1000/5, 1200/5, 1600/5, 1800/5, 2000/5, 2500/5 (2 x overscale)	96 x 96		31.50

**Note: Replace \* with Scale Plate value**

## SWITCHBOARD PANEL METERS

### VOLTMETERS - Moving Iron AC

PARTNO	VOLTS	Size mm <sup>2</sup>	Cut-out (mm)	Price
<b>BP60-300V</b>	300 V	60 x 60	55 Ø	203.70
<b>BP60-500V</b>	500 V	60 x 60	55 Ø	203.70
<b>EQ72-300V</b>	300 V	72 x 72	68 x 68	245.50
<b>EQ72-600V</b>	600 V	72 x 72	68 x 68	245.50
<b>EQ96-300V</b>	300 V	96 x 96	92 x 92	263.80
<b>EQ96-600V</b>	600 V	96 x 96	92 x 92	263.80



VOLTMETER



HOURL METER

### HOURL METERS

PARTNO	VOLTS	Size mm <sup>2</sup>	Cut-out (mm)	Price
<b>HM72-240</b>	90 - 264 VAC	48 x 48	45 x 45	397.80
<b>HM72-415</b>	400 VAC (Note: The above includes a HM-72X72)	48 x 48	45 x 45	447.00
<b>HM-DIN</b>	90 - 264 VAC / 415 VAC	2 mod (36mm)		343.00
<b>HM-72X72</b>	72 x 72 square bezel			25.60

All Prices Exclude VAT and are subject to change without prior notice.

## SWITCHBOARD PANEL METERS

### POWER FACTOR METER



POWER FACTOR METER

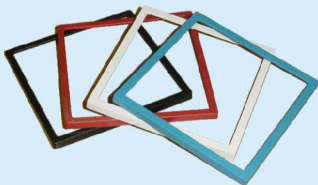
PARTNO	VOLTS	Size mm <sup>2</sup>	Cut-out (mm)	Price
<b>CQ96DR</b>	400 V	96 x 96	92 x 92	<b>1051.00</b>



FREQUENCY METER

### FREQUENCY METERS (Pointer)

PARTNO	HERTZ	Size mm <sup>2</sup>	Cut-out (mm)	Price
<b>ZQ72-220F</b>	45-55 Hz	72 x 72	68 x 68	<b>568.00</b>
<b>ZQ72-380F</b>	45-55 Hz	72 x 72	68 x 68	<b>568.00</b>
<b>ZQ96-220F</b>	45-55 Hz	96 x 96	92 x 92	<b>583.00</b>
<b>ZQ96-380F</b>	45-55 Hz	96 x 96	92 x 92	<b>15.00</b>



### SPARES & ACCESSORIES

PARTNO	DESCRIPTION	Price
<b>B96/*</b>	Bezels ( <b>Replace * with R for red, B for blue, W for white</b> )	<b>22.90</b>
<b>TE72</b>	Polycarbonate back terminal covers (IP20) for EQ72 series	<b>19.50</b>
<b>TE96</b>	Polycarbonate back terminal covers (IP20) for EQ96 series	<b>19.50</b>
<b>GE72</b>	Spare Glass for EQ72 Series	<b>16.60</b>
<b>GE96</b>	Spare Glass for EQ96 Series	<b>16.60</b>
<b>GB96</b>	Spare Glass for BIEQ96 Maximum Demand Meters	<b>28.10</b>

# CURRENT TRANSFORMERS

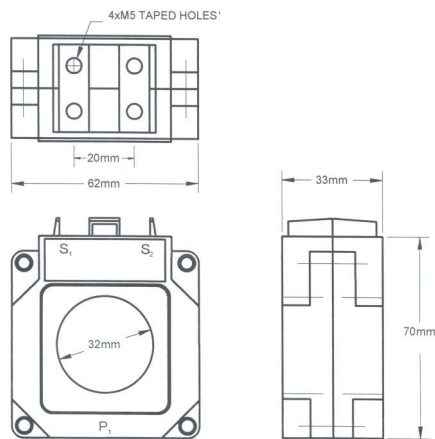
## 32 mm RING TYPE

Hole size: 32 mm Dia.



KRO Series CT

PARTNO	MOUNTING	CLASS 1 VA	CLASS 3 VA	Price
KRO-50/5	SCREW	-	1.25	180.90
KRO-60/5	SCREW	-	2.5	180.90
KRO-80/5	SCREW	-	2.5	180.90
KRO-100/5	SCREW	2.5	3.75	180.90
KRO-150/5	SCREW	5.0	7.5	180.90
KRO-200/5	SCREW	5.0	7.5	199.20
KRO-250/5	SCREW	7.5	10.0	199.20
KRO-300/5	SCREW	10.0	15.0	199.20
KRO-400/5	SCREW	10.0		199.20



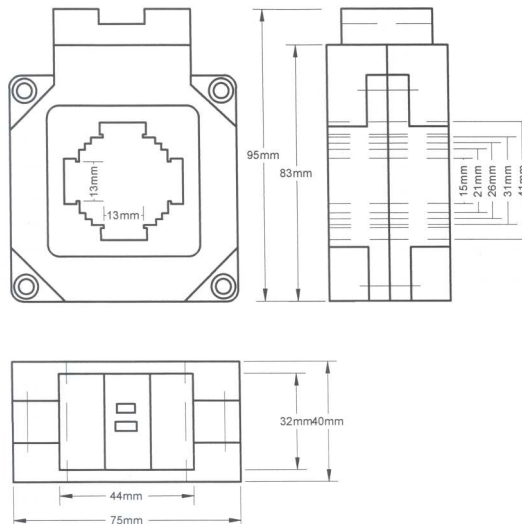
## KR2 SERIES - RING TYPE

Hole size: 32 mm Dia.  
Busbar size: 40 x 12.5 mm



KR2 Series CT

PARTNO	MOUNTING	CLASS 0.5 VA	CLASS 1 VA	CLASS 3 VA	Price
KR2-300/5	SCREW	10.0	5.0	20	239.30
KR2-400/5	SCREW	20.0	25.0	30	252.80
KR2-500/5	SCREW	30.0	-	-	280.10
KR2-600/5	SCREW	25.0	30.0	-	280.60
KR2-800/5	SCREW	7.5	10.0	15	313.40



All Prices Exclude VAT and are subject to change without prior notice.

# CURRENT TRANSFORMERS

## LR1 SERIES - RING TYPE

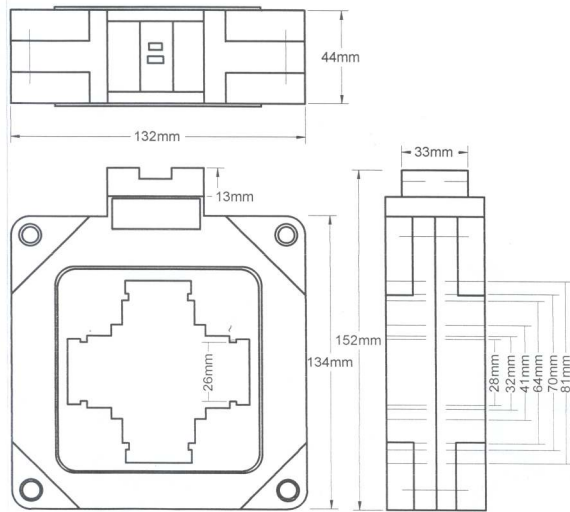
Hole size: 50 mm Dia.  
 Busbar size: 80 x 26 mm



LR1 Series CT

PARTNO	CLASS 1 VA	CLASS 1 VA	CLASS 3 VA	Price
LR1-600/5	7.5	25.0	30.0	326.60
LR1-800/5	20.0	25.0	-	341.20
LR1-1000/5	30.0	-	-	357.60
LR1-1200/5	30.0	-	-	374.80
LR1-1600/5	25.0	30.0	-	438.60
LR1-2000/5	30.0	-	-	469.60
LR1-2500/5	-	-	-	474.90

Note: 1a & 4-20ma secondary output available on request.



All Prices Exclude VAT and are subject to change without prior notice.

